

VILLA **HC019**



BLANC ALTEA HOMES

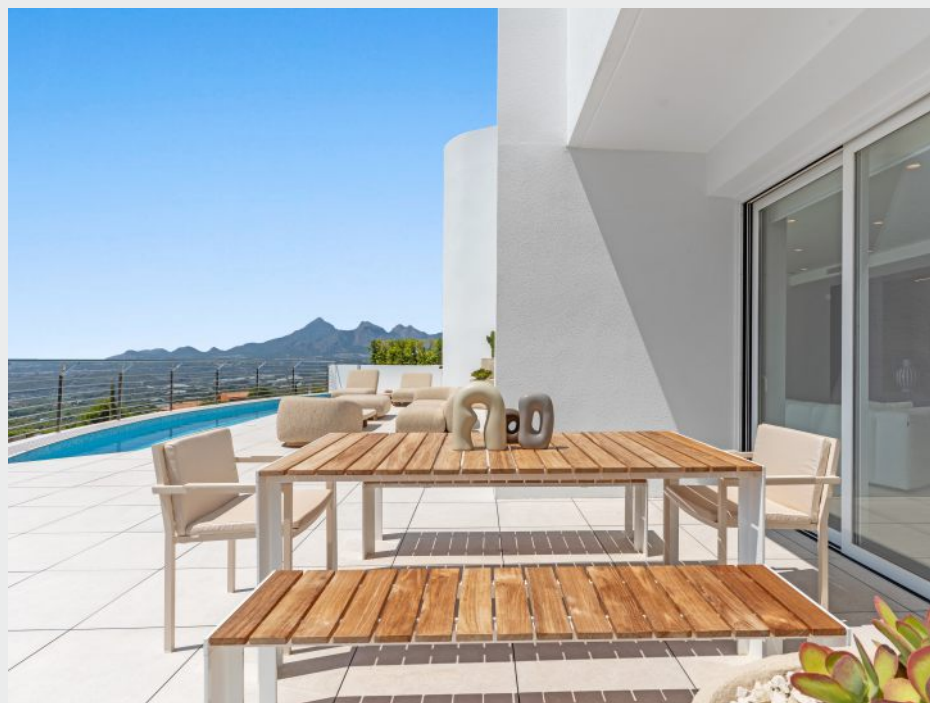


A RESIDENTIAL AREA FULL OF LIGHT,
WITH LARGE INTERIOR SPACES
AND UNIQUE ARCHITECTURE





This four-floor detached house in Altea stands out not only for its contemporary design and high-quality materials but also for its commitment to sustainability and technology. It is a true oasis of luxury and comfort in one of the most desirable destinations on the Costa Blanca, perfect for those seeking a superior quality of life in an incomparable setting.

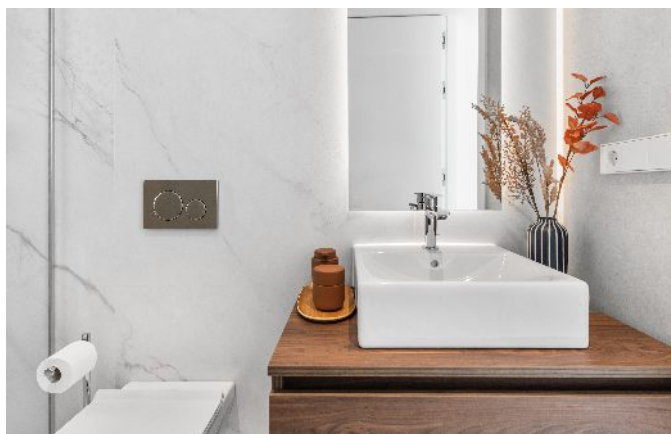






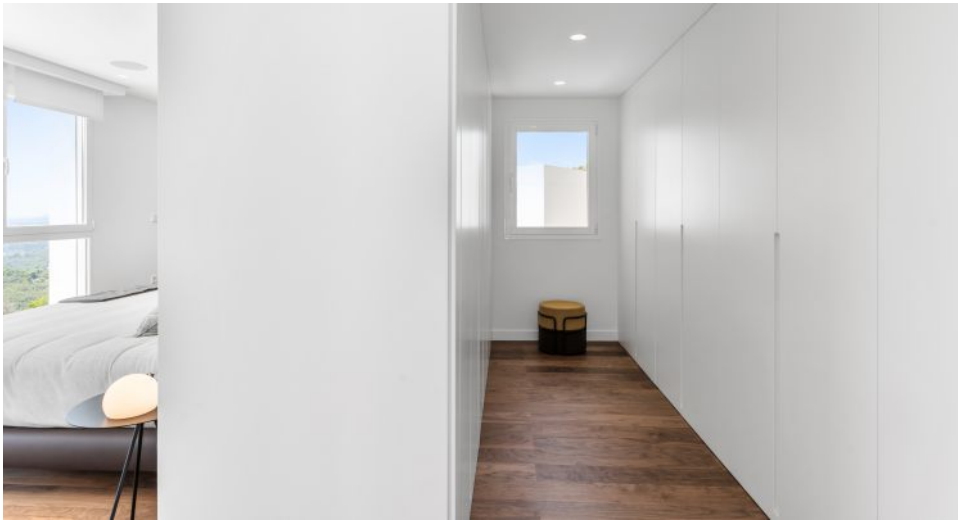




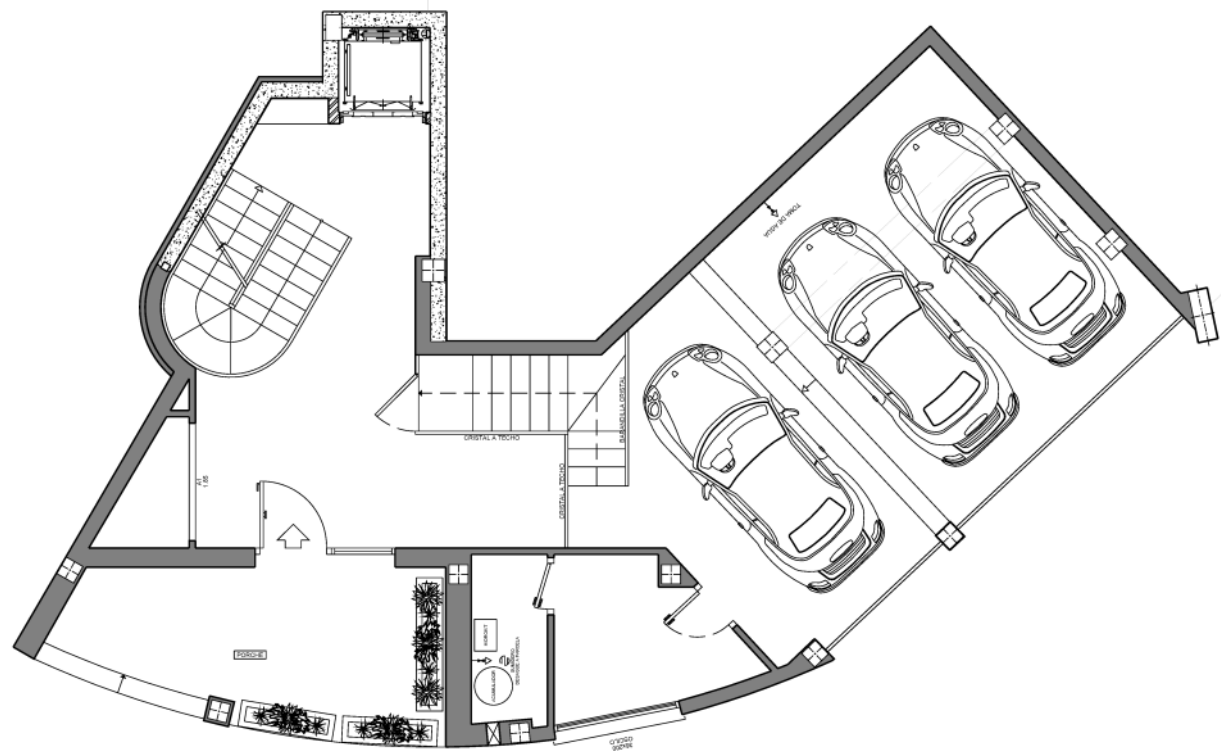




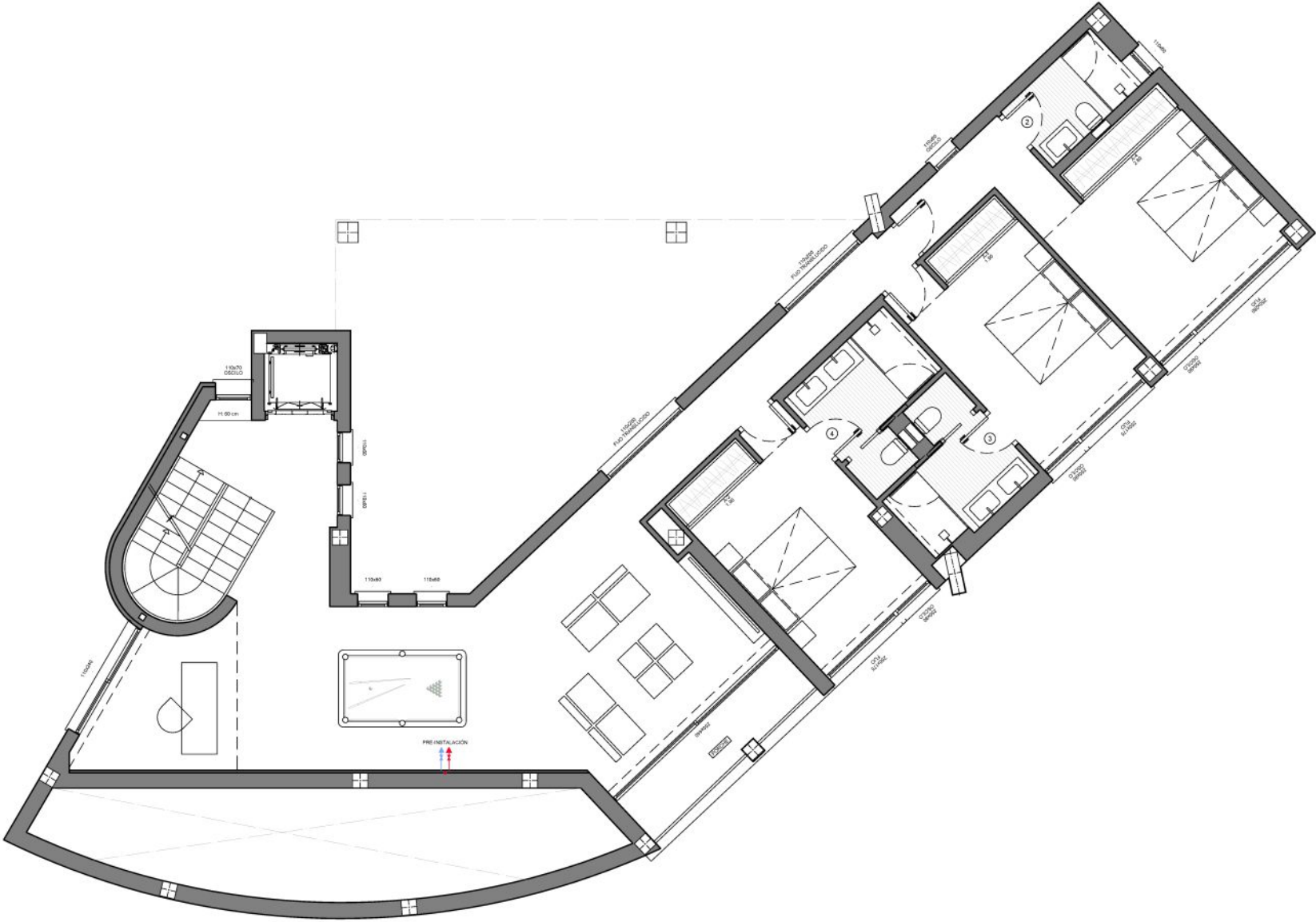




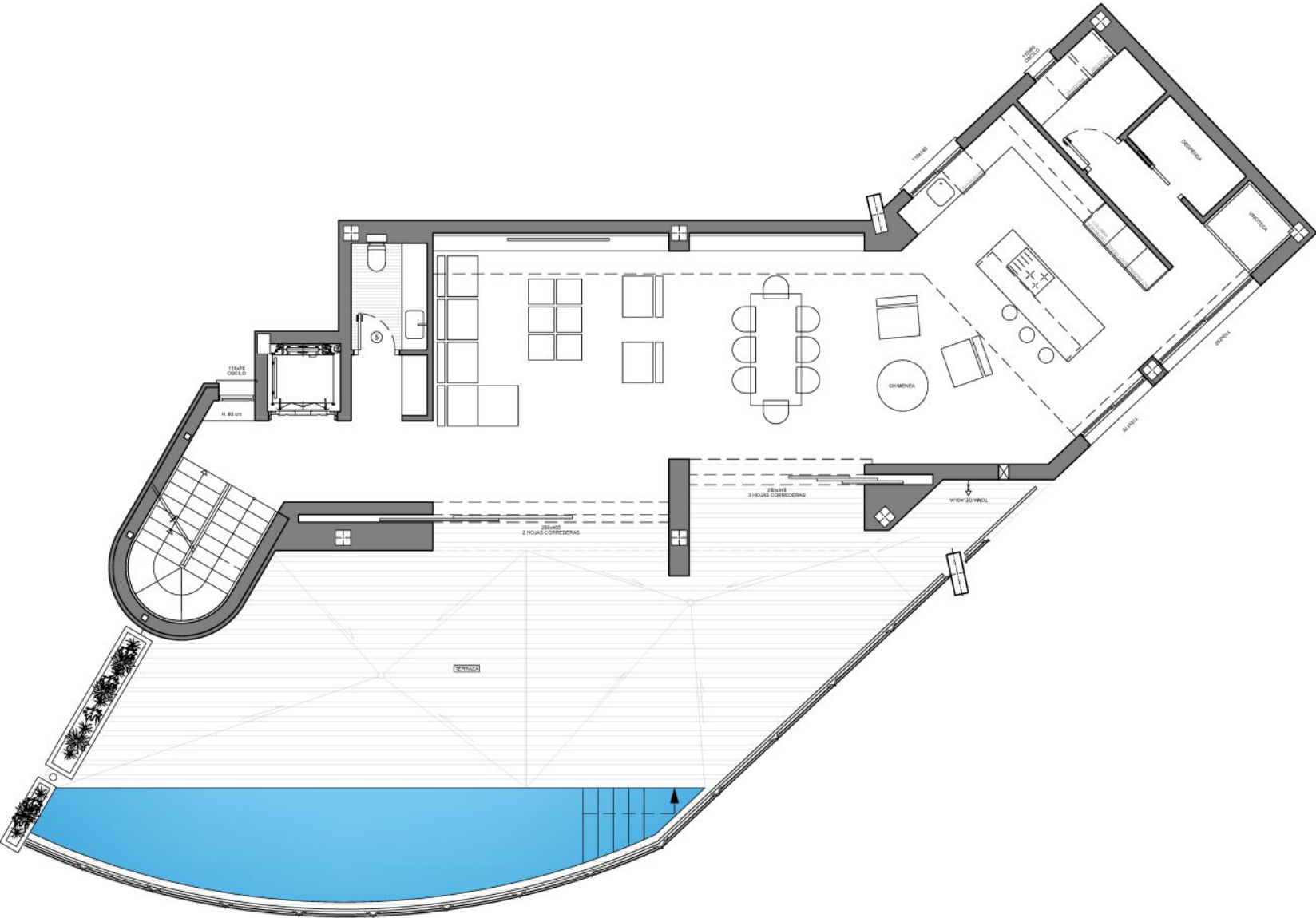
GROUND FLOOR



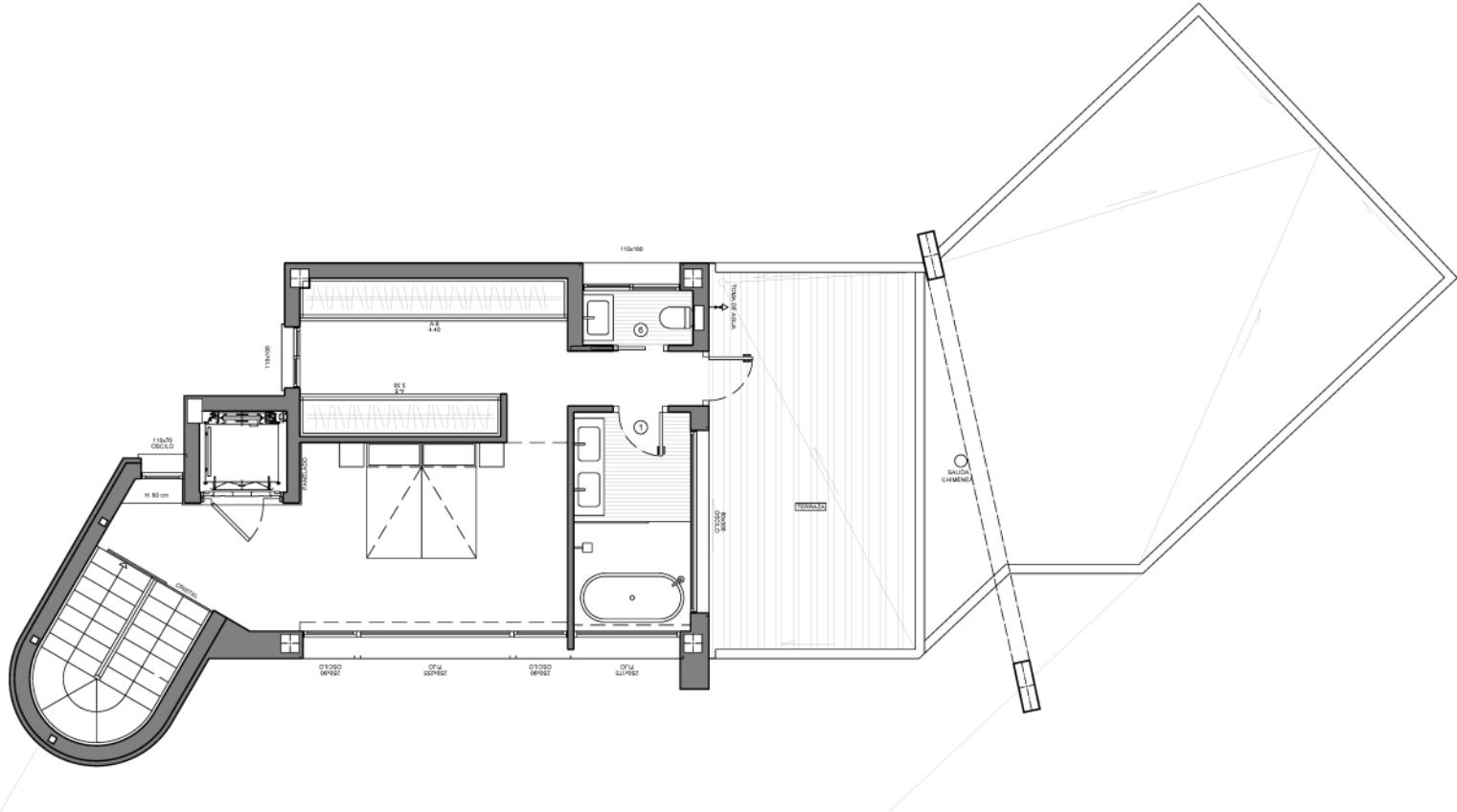
SECOND FLOOR



FIRST FLOOR



THIRD FLOOR





Living area: 405,29 m²

Garage: 66,33 m²

Porch: 19,45 m²

Terraces: 125,09 m²

Bedrooms: 4

Bathrooms: 5

TV room

Billiard Room

Office

Kitchen with pantry, laundry room, wine cellar

A lift that connects the four floors of this house, providing an extra level of comfort from the SCHINDLER brand, fully integrated into the decor. The door and surrounding walls are panelled in white, blending in with the house and allowing the spotlight to fall on the designer staircase with vertical tension cables from floor to ceiling.





UNIQUE DETAILS
AND HIGH QUALITY FINISHES



KITCHEN

Tailor-made kitchen with LOW units and COLUMNS with doors finished in TITANIUM GREY colour, HIGH units finished in VICTORIA WALNUT wood with LED strip under wall units and units with drawer in ISLA finished in TITANIUM GREY colour. SIEMENS electrical appliances.



WINE CELLAR

Custom-built wine storage unit featuring a Siemens wine cooler to keep wines at their optimal temperature, with decorative shelves for bottle storage, as well as various cabinets and shelves to create a unique corner for wine enthusiasts.



BATHROOM MATERIALS

Functional layouts designed to maximize space, featuring large-format tiles from the brand Cifre.



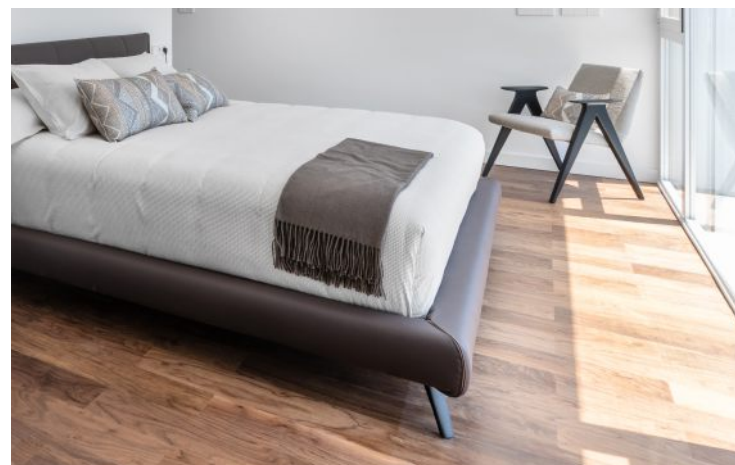
BATHROOM FINISH DETAILS

Quality in every detail, with Duravit fixtures, Hansgrohe faucets, shower screens, cabinetry, backlit mirrors, and fully completed bathrooms.



FLOORING

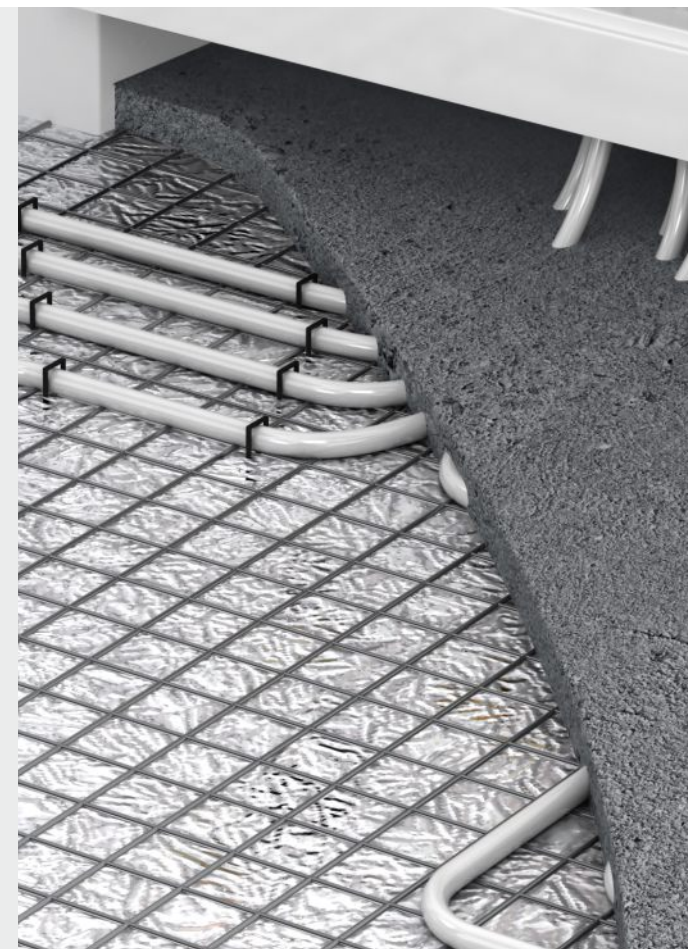
The flooring throughout the home is large-format 120x120 porcelain tile from CIFRE in IVORY MATE finish, extending onto the terrace to seamlessly connect the interior and exterior spaces.



MASTER BEDROOM FLOORING

Wooden flooring in WALNUT with a MATT VARNISH finish, approximately 1250x135 mm planks, adds a touch of luxury to the expansive master suite.

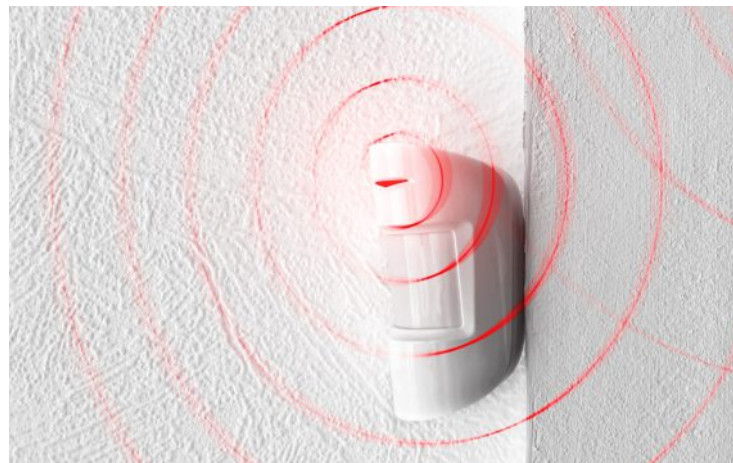
Committed to sustainability and comfort, the home features a MITSUBISHI ELECTRIC ECODAN HYBRID climate control system, which provides both underfloor heating and air conditioning.





AUDIO

The home is equipped with a Sonos audio system that allows for control of playback functions through ceiling-mounted speakers in the dining area, game room, terrace, and master bedroom. The system includes 4 SONOS CONNECT:AMP zone players, 3 pairs of BOSE in-ceiling speakers, and 1 pair of surface-mounted exterior speakers, all connected to various audio sources on the network.

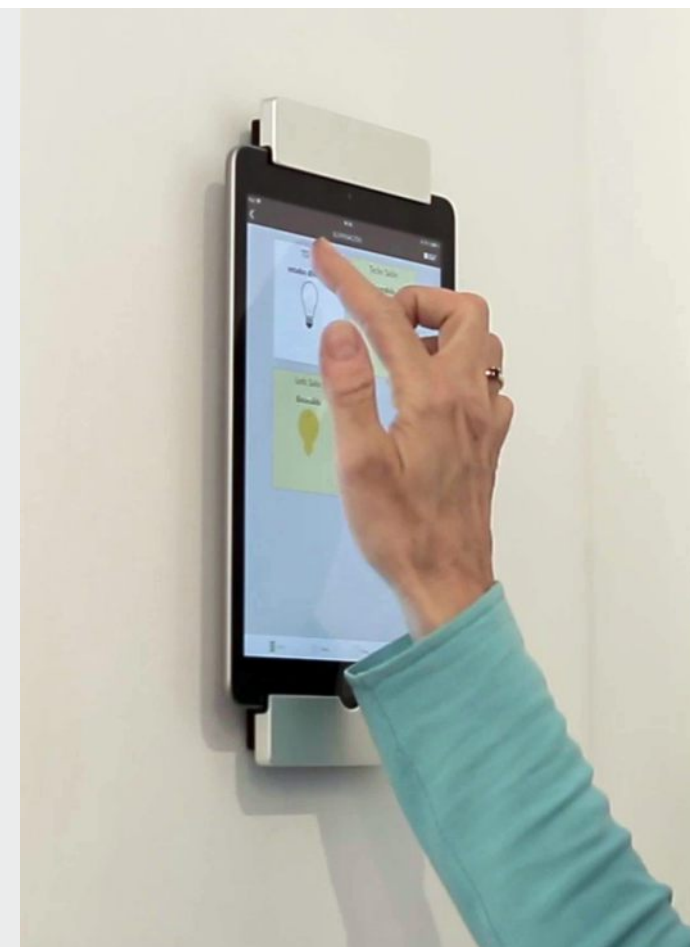


ALARMA

VISONIC PowerMaster or similar kit, including an alarm control panel, control keypad, remote control, 2 infrared detectors, and 1 camera-equipped detector. The system features an app for managing the alarm from a mobile phone or iPad.

The home is equipped with intelligent home automation, allowing for comfortable and easy management through voice commands or various mobile apps (iOS or Android). This system provides local or remote control over the following installations via the internet:

Lighting, motorized blinds, curtains, and/or shades, control of all exterior lighting circuits, opening/closing of all blinds, curtains, and shades individually or centrally climate control.





ELECTRIC VEHICLE CHARGING POIN

Pre-installation for an electric vehicle charging point in the parking area or garage (as per the plan), including a single-phase 40A circuit with a circuit breaker and residual current device.

PHOTOVOLTAIC SYSTEM

Installation of a self-consumption photovoltaic system for the home, approximately 6.6 kW, with a hybrid inverter that enables both the use of the conventional electrical grid and the photovoltaic system.



BLANC ALTEA HOMES

A development full of light with spacious interiors, unique architecture and natural surroundings, panoramic views of the Mediterranean Sea and Benidorm's skyline.

A closed residential area, with detached homes designed with avant-garde architecture, where each property has its own exclusive design, making it unique.



CLOSED RESIDENTIAL AREA



SECURITY CAMERAS

MAILBOX AREA





GARDENED COMMON AREAS
WITH WIDE AND LIGHTENED
ACCESS ROAD

PRIVATE RESIDENTIAL AREA





Living in Altea, surrounded by the sea and the mountains, in a town that maintains the essential Mediterranean character shown in its picturesque beaches, as well as its old town streets that give a sense of calmness in the warm and welcoming character of its residents.

Altea is a real paradise, a place to live. Enjoy the sea, its gastronomy, the culture and its art. Where you can appreciate a landscape of white houses full of colourful flowers, the blue and white of the internationally famous dome and its natural surroundings with endless walking routes for nature lovers and its unique coves and beaches with turquoise blue water.



✉ Avda. País Valencià, 22
03720 Benissa (Alicante) - Spain

☎ 0034 900 123 323

@ vapf@vapf.com

🌐 www.vapf.com

f VAPFGroup

📷 vapf_group

▶ VAPFGroup



2025- The company reserves the right to modify , without previous warning the information contained in this catalogue. The pictures of this catalogue are only for guidance and have no contractual value for the company. The final plans and finishing details of each property will be subject to the clauses contained in the corresponding contract. In addition, these images correspond to specific projects, so that a change of location to other plots will implicate modifications. The Spanish version prevails. The information contained in this catalogue is valid on the date of issue.