

# VILLA TEMPO



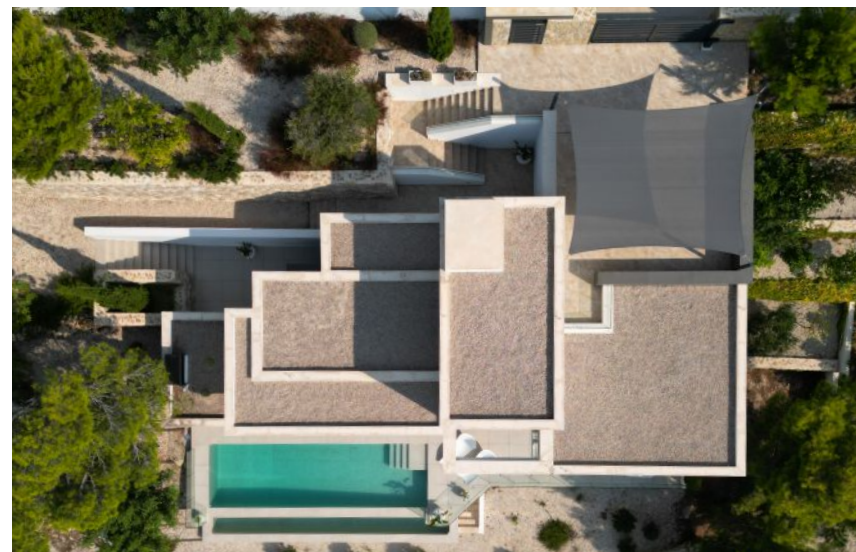
AZURE ALTEA HOMES



EVERYTHING YOU NEED TO SETTLE  
IN TO YOUR NEW HOME





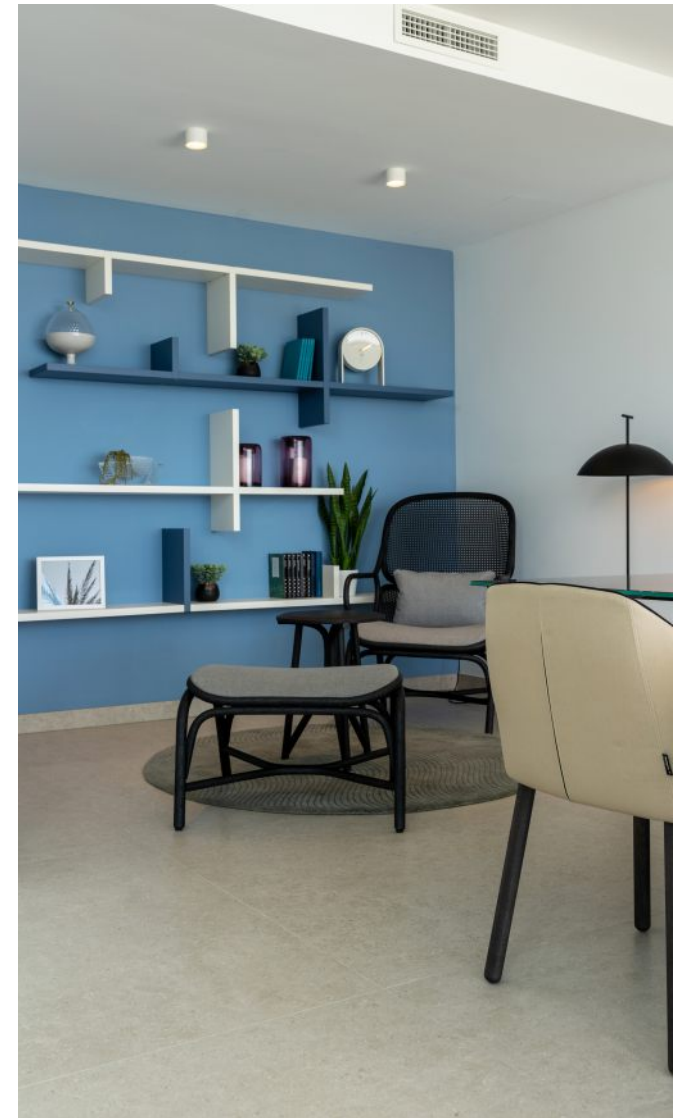








FINISHED AND FURNISHED PROPERTY. KEY READY













Villa Tempo is a house designed to share unforgettable moments, and from the minute you arrive, you will be embraced by breathtaking sea views through a large glass window on the top floor. This space, which serves as the central heart of the villa, connects different floors by lift and stairs and offers a comfortable parking space for two vehicles.

The middle floor has three exceptional bedrooms. Two of them feature en-suite bathrooms, large wardrobes and access to a shared terrace, inviting you to enjoy the sea breeze and panoramic views. The master bedroom is simply spectacular, equipped with a generous walk-in wardrobe, an en-suite bathroom including a relaxing bathtub, a private terrace and a perfectly positioned bed to wake up every morning to a sea view.







On the ground floor, the living areas are designed for you to enjoy the villa at its very best. The kitchen is highlighted by a huge central island, perfect for preparing your favourite meals and enjoying a leisurely breakfast or a quick snack. In addition, Villa Tempo has two dining areas: an outdoor area covered by a large porch with a barbecue, ideal for enjoying open-air dinners, and an indoor area, which opens which opens to the elegant living room and the impressive main terrace. Here you will find different connected spaces, from the reading spot to the outdoor lounge, all framed by a spectacular infinity pool.

The villa has been designed with an open architecture to the exterior, so that the panoramic views of the paradise surroundings of the Costa Blanca become an essential part of the living experience at Villa Tempo.

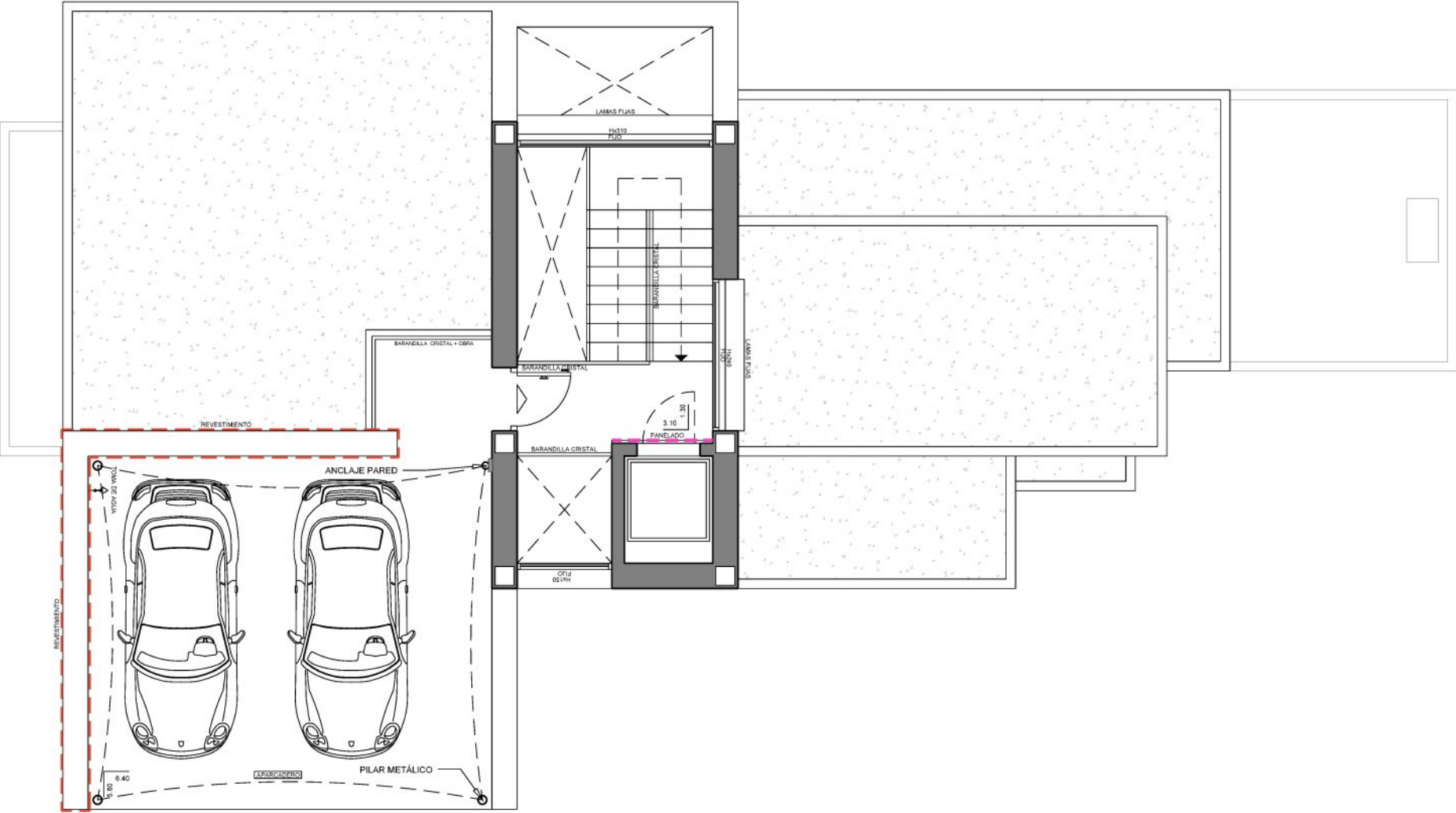




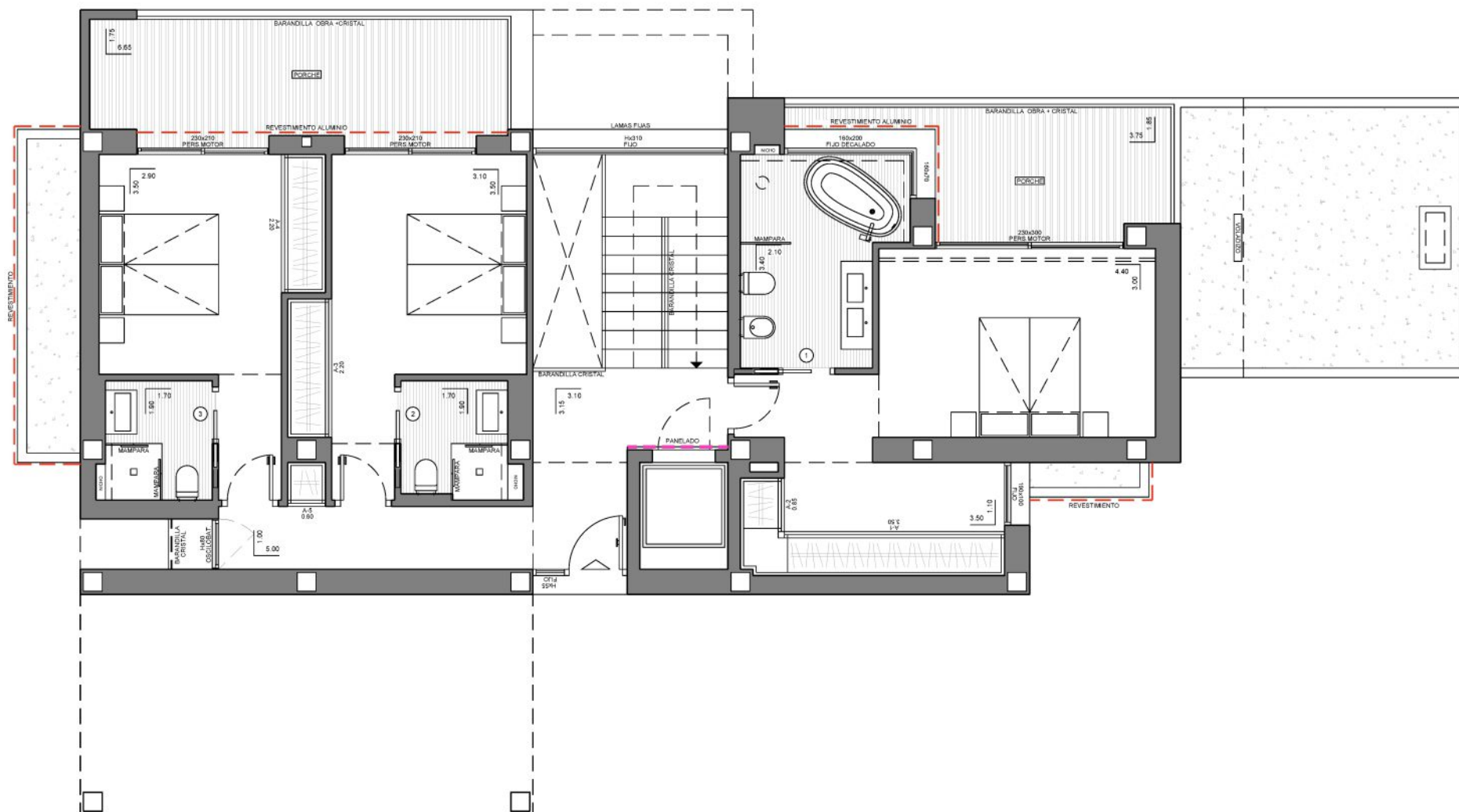




TOP FLOOR













This house is not only a space with a contemporary design, but also a commitment to efficiency and sustainability. Its energy efficiency certificate is class A, backed by the installation of solar panels, underfloor heating, and Tecna windows, it reflects its conscious approach to energy consumption.

By choosing this residence, you will not only enjoy elegance and comfort, but you will also be actively contributing to environmental conservation and building a more sustainable future.

Welcome to a home where luxury and well-being blend harmoniously!





THE CONSCIOUS HOME  
OF THE FUTURE



## ENERGY EFFICIENCY CERTIFICATE A

Discover a residence distinguished by its Class A energy efficiency certification. Designed to maximise efficiency and minimise environ-mental impact.



## UNDERFLOOR HEATING

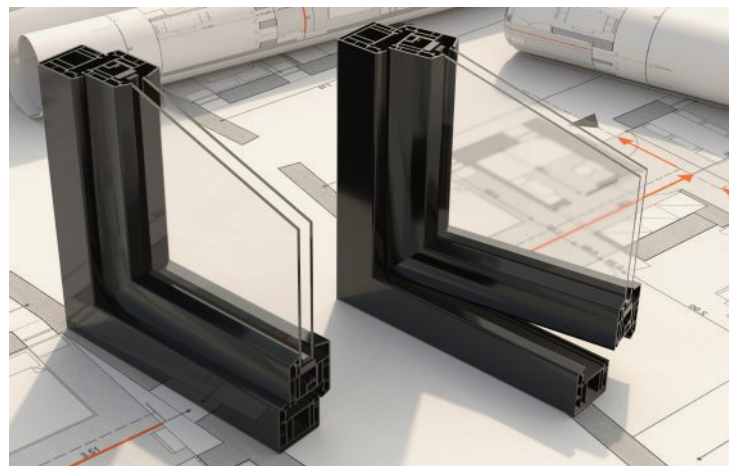
Experience the comfort of underfloor heating, a system that distributes heat evenly, creating a cosy atmosphere throughout the house.





## DOMÓTICA

Control your home with ease thanks to home automation. From raising the blinds to regulating the heating, even managing the water, all from your device and remotely. Experience the convenience of a home that adapts to your needs with just one touch.



## STYLE AND EFFICIENCY IN EVERY VIEW

TecnaL windows are not only a display of style, they also contribute to exceptional thermal insulation, maintaining the perfect temperature in every room.

This home has a modern lift that will simplify your daily life. Forget about climbing stairs with shopping bags; with just the push of a button, the elevator effortlessly takes you to every level. A convenience that transforms your shopping into a hassle-free activity.







UNIQUE DETAILS  
AND HIGH QUALITY FINISHES



## LARGE FORMAT FLOORING

Experience the feeling of spaciousness with stunning large-format floors. Each space is visually transformed, creating continuity that expands the perception of every room. This detail not only elevates the design but immerses you in a unique experience where expansiveness awaits at every step.



## LED LIGHTING IN WARDROBES

Bring your wardrobe to life with integrated LED lighting. Every outfit comes to life under a soft, bright light, turning your wardrobe into a clean, illuminated space. This feature is not only functional, but also visually elegant, adding a touch of luxury to your daily routines and turning your wardrobe into a space to be admired.



## FLOOR-TO-CEILING DOORS

Floor-to-ceiling doors are not just entrances, but true showcases of style. Each room is presented in a majestic manner, providing a seamless connection between spaces and highlighting the ceiling height. This design not only brings sophistication but also plays with light and spaciousness, creating unique and immersive environments.



Villa Tempo cuenta con una zona de barbacoa y comedor exterior, ya amueblada, ideal para disfrutar de comidas al aire libre. El diseño es minimalista, con líneas limpias y tonos neutros, en donde destacan las grandes losas en el suelo y las paredes lisas. El porche también comunica directamente con la cocina principal de la vivienda y cuenta con un baño adjunto, proporcionando comodidad y funcionalidad al espacio exterior. Una estancia que gracias al maravilloso clima mediterráneo se disfruta durante prácticamente todo el año.







Living in Altea is breathing sea and mountain. This town in Alicante preserves the Mediterranean character reflected in its pebble beaches and cobbled streets of its old town. The open and hospitable nature of its residents will make you feel at home.

Altea is a shelter to live, feel and enjoy the sea, nature, gastronomy and culture. Its landscape is marked by its white houses and the blue dome of its internationally renowned church. Immerse yourself in the streets and let yourself be enchanted by this very special town.



✉ Avda. País Valencià, 22  
03720 Benissa (Alicante) - Spain

☎ 0034 900 123 323

@ vapf@vapf.com

🌐 www.vapf.com

f VAPFGroup

📷 vapf\_group

▶ VAPFGroup



2025- The company reserves the right to modify , without previous warning the information contained in this catalogue. The pictures of this catalogue are only for guidance and have no contractual value for the company. The final plans and finishing details of each property will be subject to the clauses contained in the corresponding contract. In addition, these images correspond to specific projects, so that a change of location to other plots will implicate modifications. The Spanish version prevails. The information contained in this catalogue is valid on the date of issue.